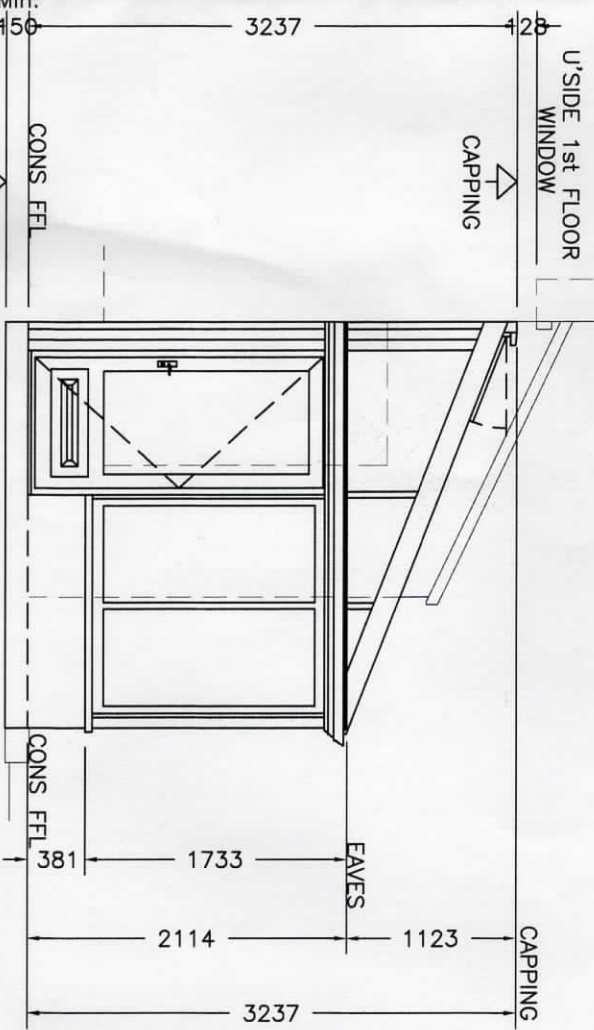


BE AWARE NO ABUTTING WALLS ARE PERFECTLY TRUE, THEREFORE ENSURE THAT ANY SETTING OUT IS DONE BY THE PLUMB LEVELS FROM THE FURTHEST PROTRUDING POINT ON THE MAIN HOUSE WALL WHICH ABUTS THE CONSERVATORY. IF IN DOUBT PLEASE CONTACT OUR REPRESENTATIVE OR ALTERNATIVELY HEAD OFFICE.



SIDE ELEVATION

THE BUILDER TO ENSURE A Min. 150 mm CLEARANCE IS ACHIEVED FROM EXTERNAL GROUND TO CONS FFL.

AMDEGA CONSERVATORIES LTD OWNS THE COPYRIGHT OF THIS UNIT DRAWING. UNAUTHORISED PARTIAL OR COMPLETE REPRODUCTION, IN EITHER 2 OR 3 DIMENSIONAL FORM MAY RESULT IN LEGAL ACTION.

BUILDING NOTES

1. ALL SIZES ON THIS DRAWING ARE BASED UPON THE ASSUMPTION THAT THE ABUTTING WALL IS BOTH PLUMB AND SQUARE. IF THESE CONDITIONS DO NOT APPLY CORRECTION MUST BE MADE BY -
 - PACKING AND FILLING
 - ADJUSTING BASEWORK TO THE REVISED DATUM POINT
2. ENSURE WHEN SETTING OUT CONSERVATORY FFL THAT EXISTING DOORS AND WINDOWS ARE NOT OBSTRUCTED BY CONSERVATORY COMPONENTS
3. WHERE A SLOPING ROOF IS ABOVE THE CONSERVATORY, WE RECOMMEND THAT SNOW GUARDS SHOULD BE FITTED TO THE EAVES OF THE EXISTING BUILDING.

IF IN DOUBT PLEASE CONTACT AMDEGA TECHNICAL DEPARTMENT - TEL No 01325 468522 FAX No 01325 381708

03.04.03	70 mm PACKER INCORPORATED BEHIND RIDGE. PROJECTION UNCHANGED.		A
DATE	REVISION		REF

OPTIONAL REQUIREMENTS

DOOR OPENING DIRECTION	INWARDS	OUTWARDS	Y
NUMBER OF ROOF VENTILATORS	2		