

NEW OPENING AND DOORS BY OTHERS, REMOVAL WILL CONTRAVENE BUILDING REGULATIONS EXEMPTION

interior x exterior possible rot maybe just paint work.

interior corner rot (photo)

Exterior water ingress "bodge" repair

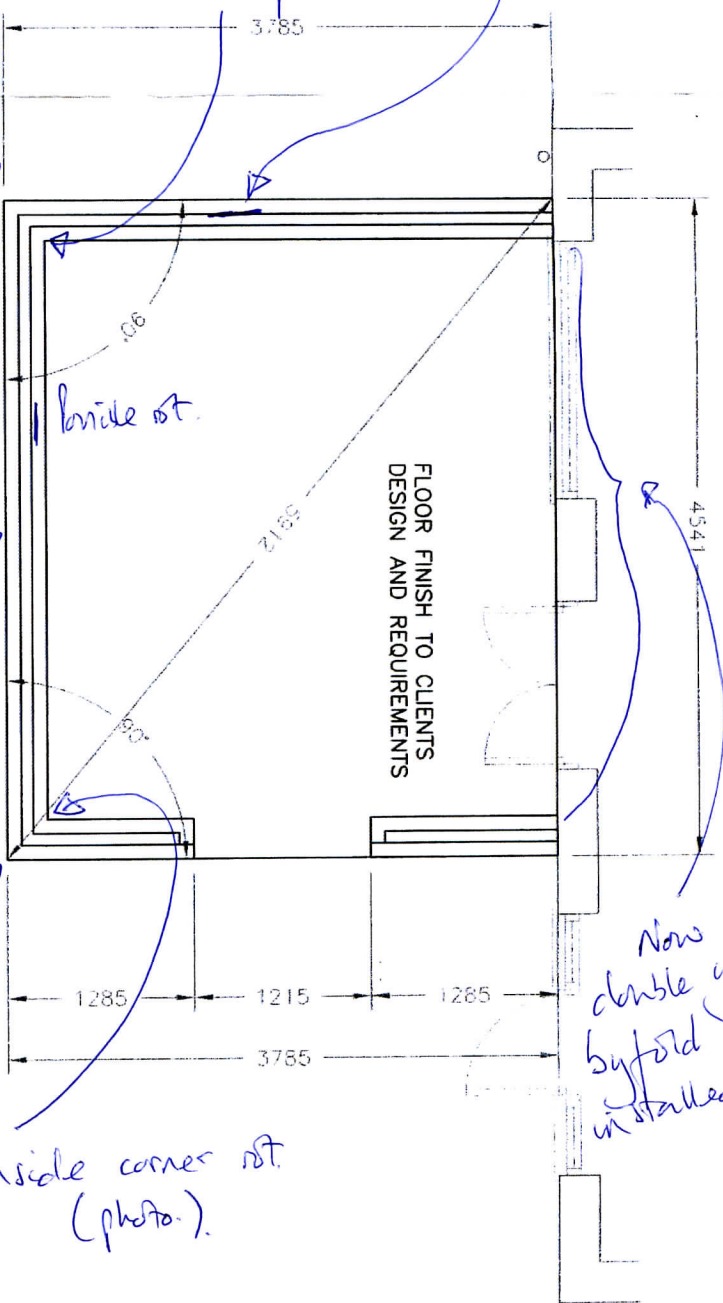
Exterior - small rot

Exterior water ingress "bodge" repair

inside corner rot (photo)

Now double glazed sash door installed 2021

FLOOR FINISH TO CLIENTS DESIGN AND REQUIREMENTS



B A S E W O R K L A Y O U T

FOR DWARF WALL DETAILS REFER TO DRG Nos RCD1127 & RCD1128.

DATE

CONTRACT :

AT

4 CHIL
EDENB
KENT
TN8 5

FOR

CLIENT

MR. R.

DRAWING TITLE

DOUBL

RIC
CON

FAVERD.

Co. D
Tel
Fax

DRAWN BY:

DRF

CHECKED:

DATE:

04/10/02